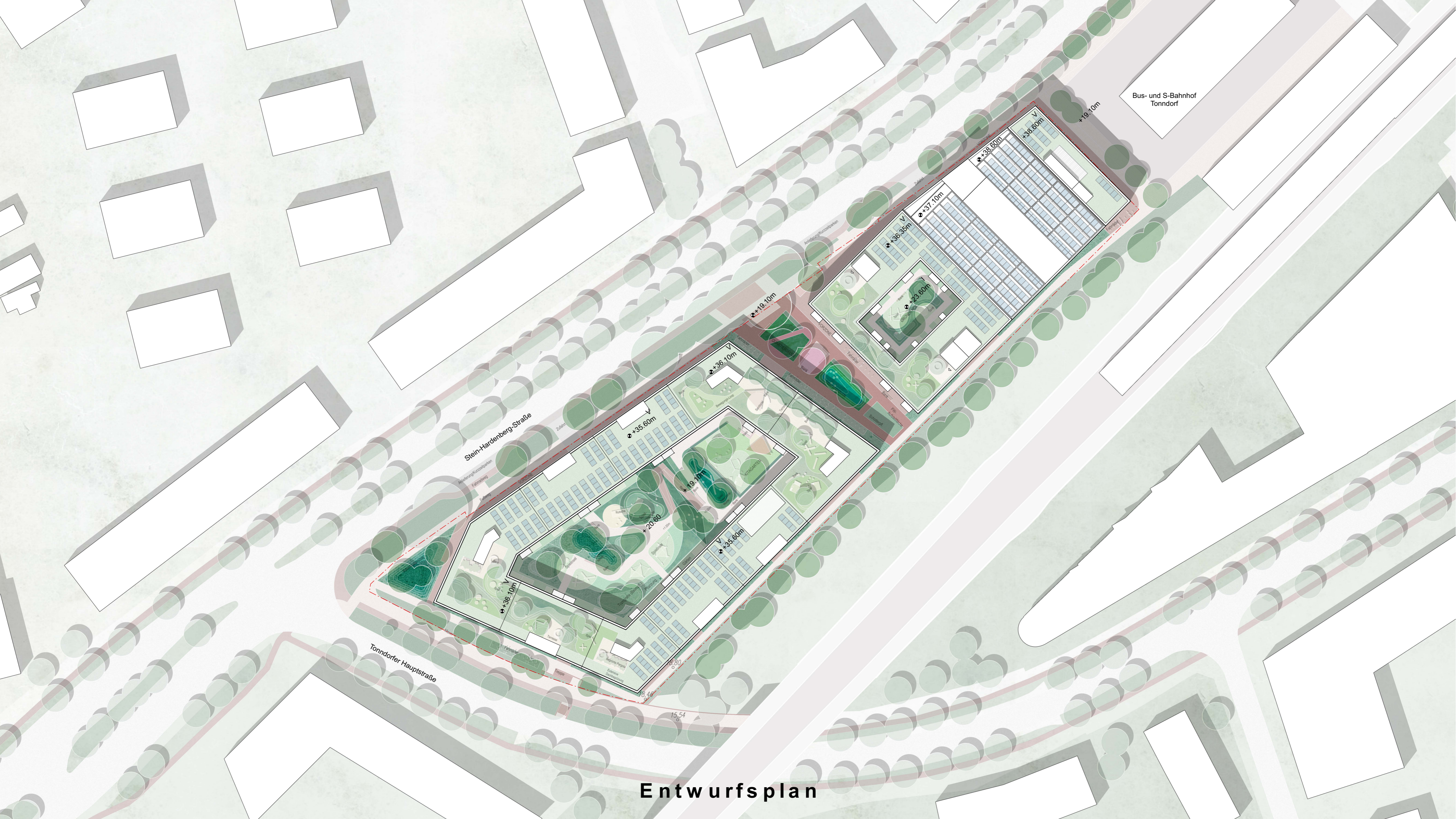


Stand Nov. 2025



Neubau an der Stein-Hardenberg-Straße
LH Architekten, Mera Landschaftsarchitektur, Winter Ingenieure

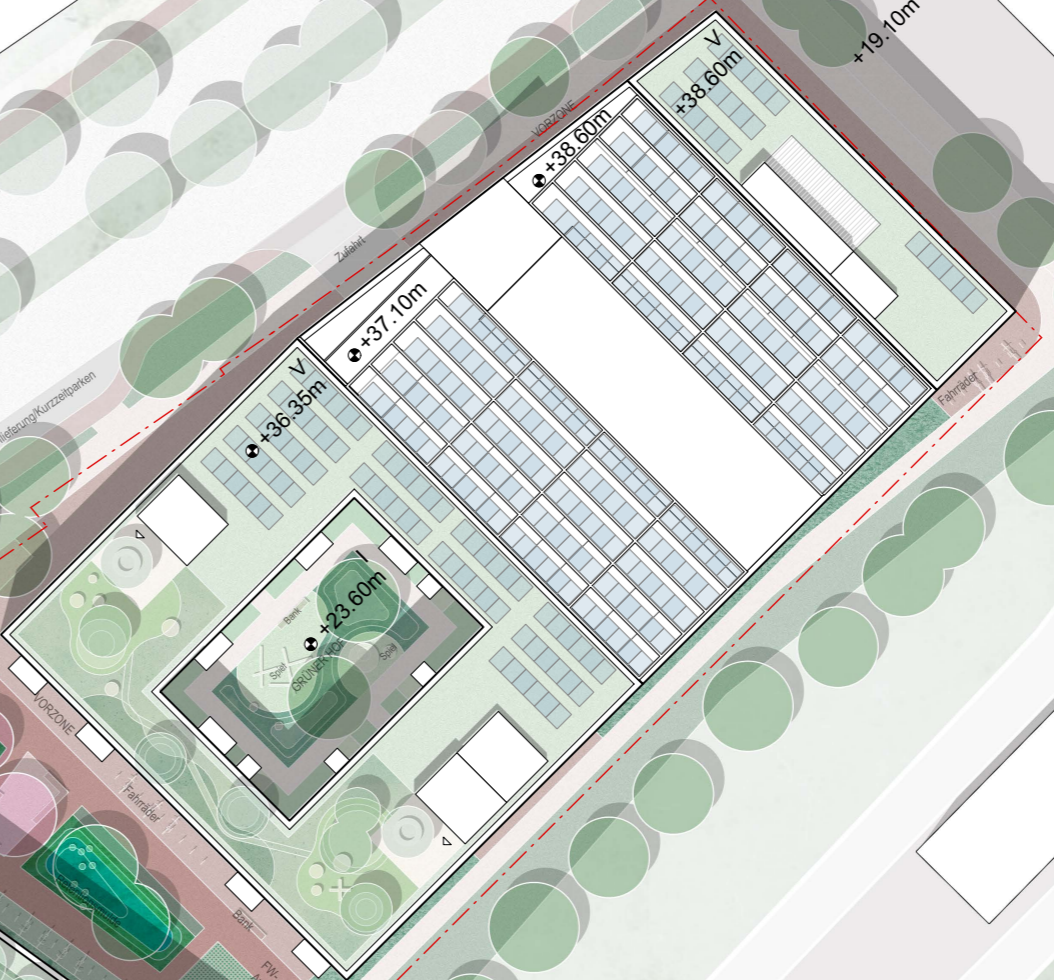


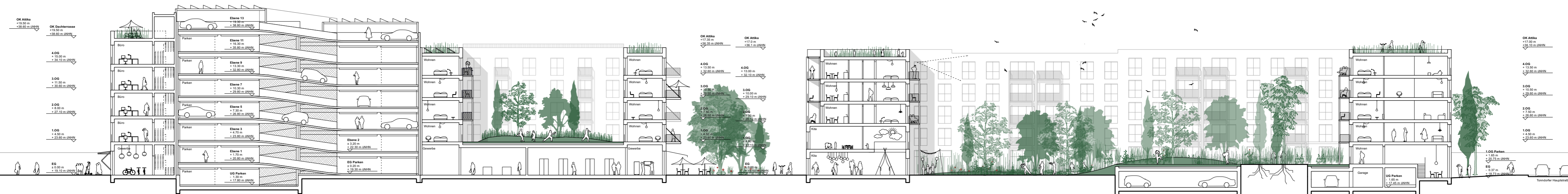
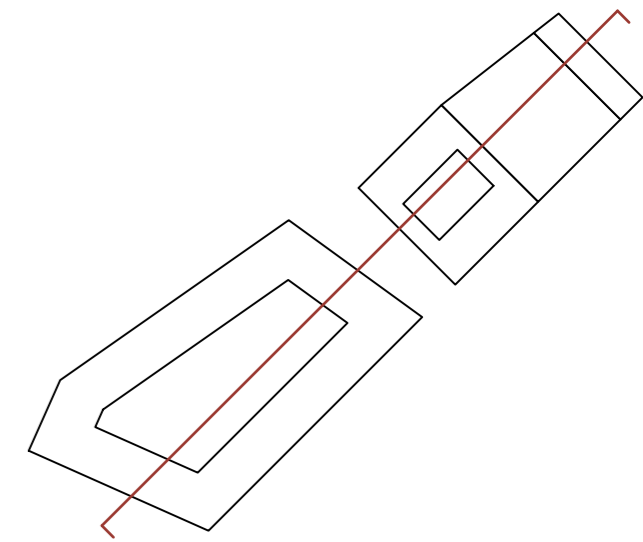
Bus- und S-Bahnhof
Tonndorf

Stein-Hardenberg-Straße

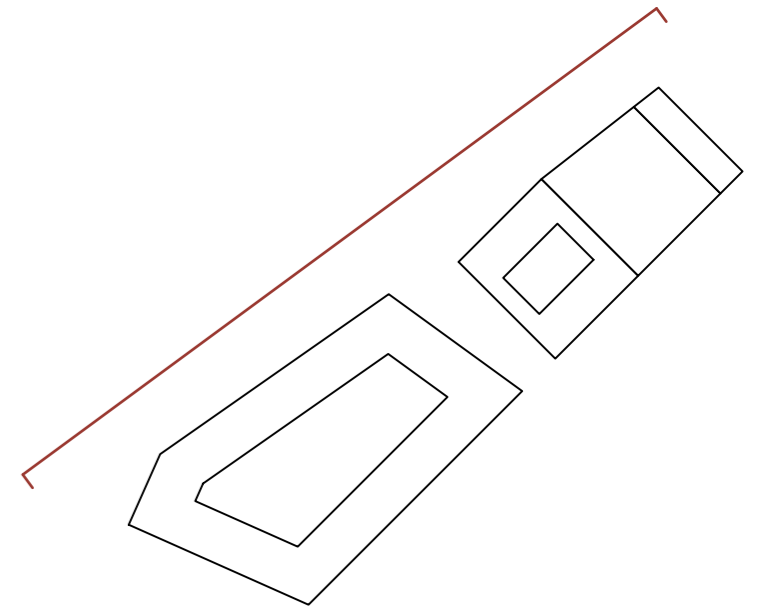
Tonndorfer Hauptstraße

Entwurfsplan





Längsschnitt



Ansicht von Nord-West



